



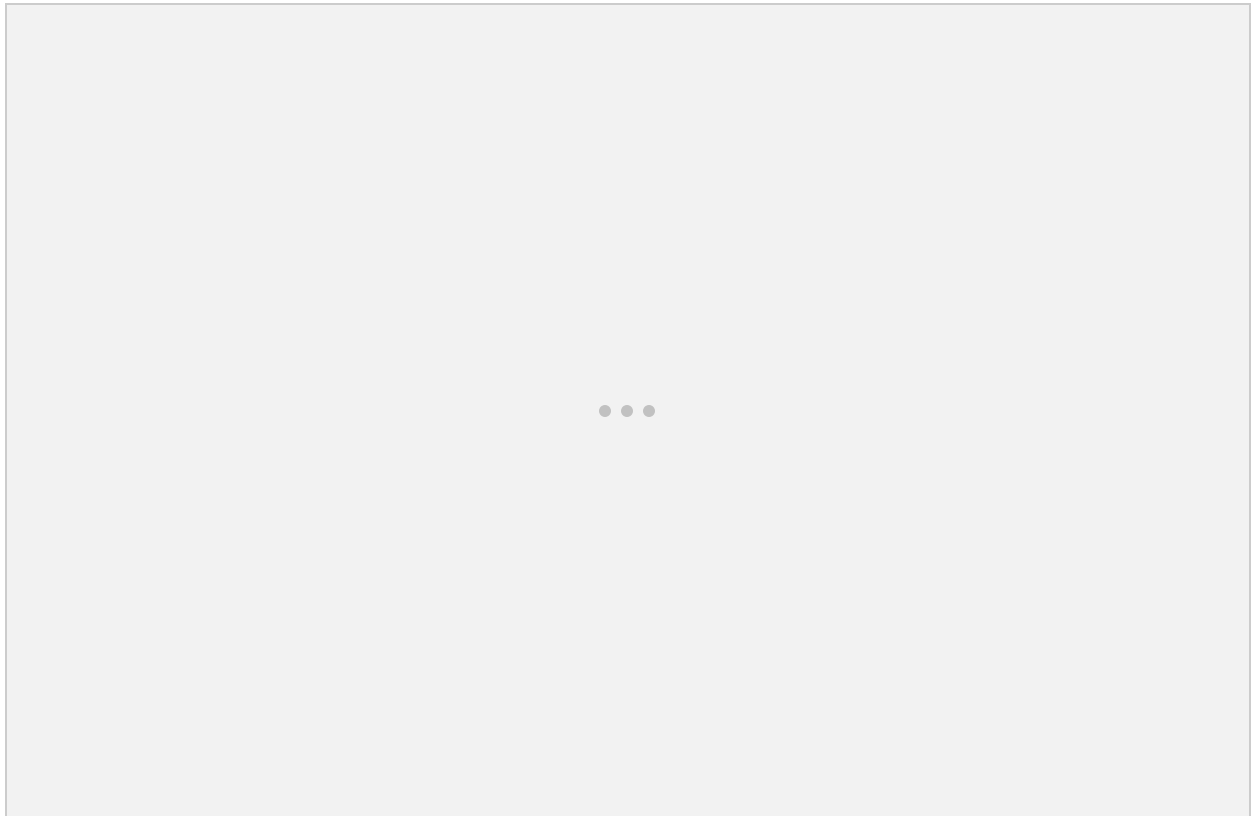
1st bridge over the Rogue at Sixth Street 1886



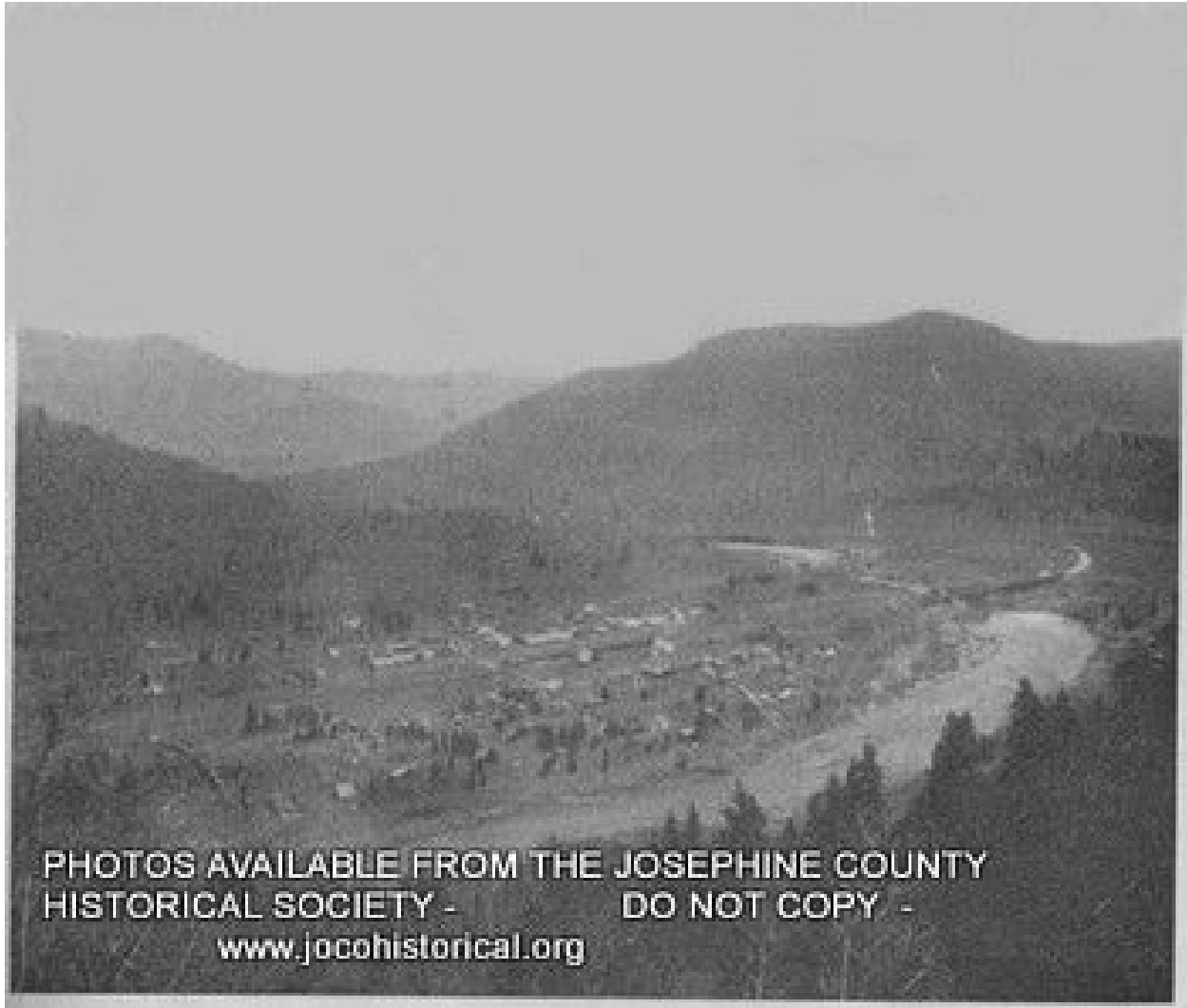
1st Bridge at Grants Pass 1886



2nd & 3rd bridge side by side



1964 flood on Rogue at Grants Pass

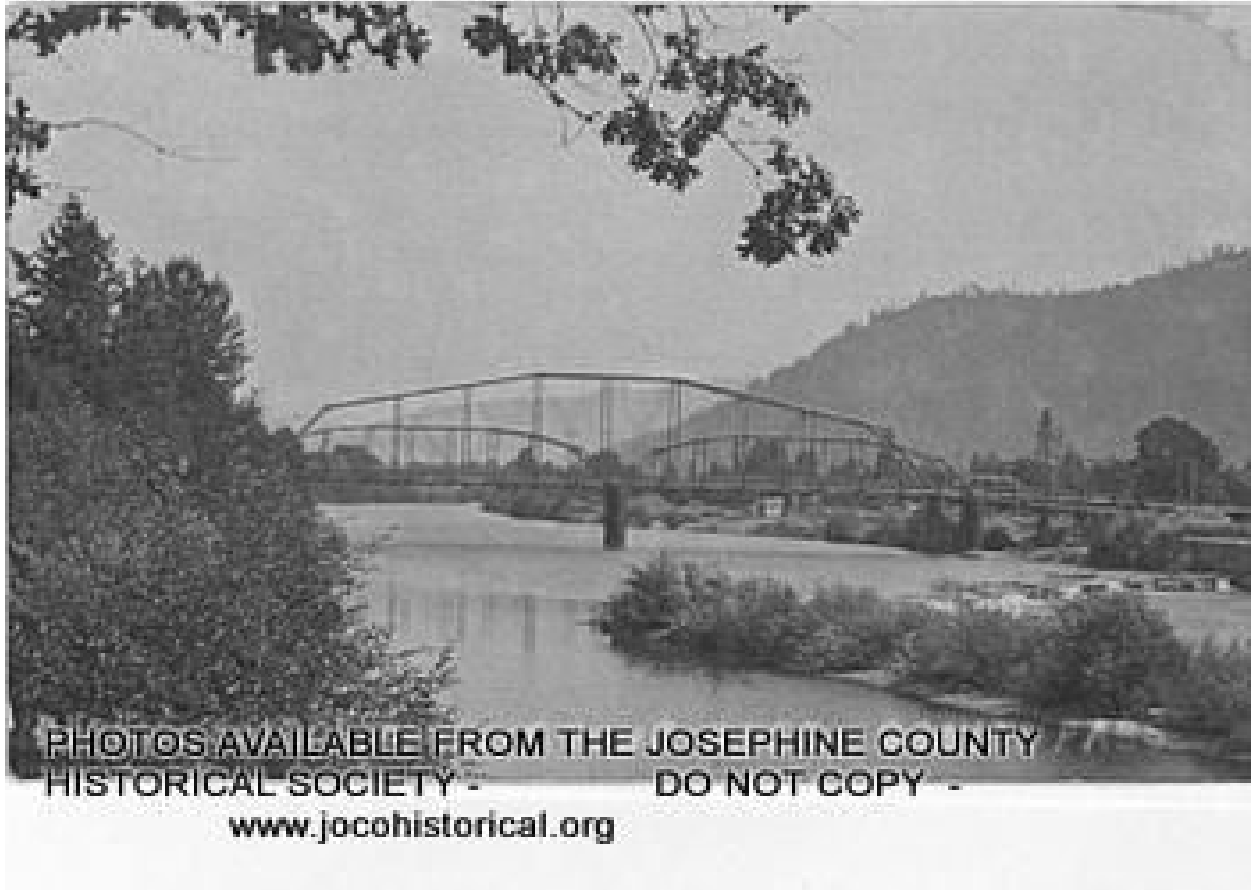


PHOTOS AVAILABLE FROM THE JOSEPHINE COUNTY
HISTORICAL SOCIETY - DO NOT COPY -
www.jocohistorical.org

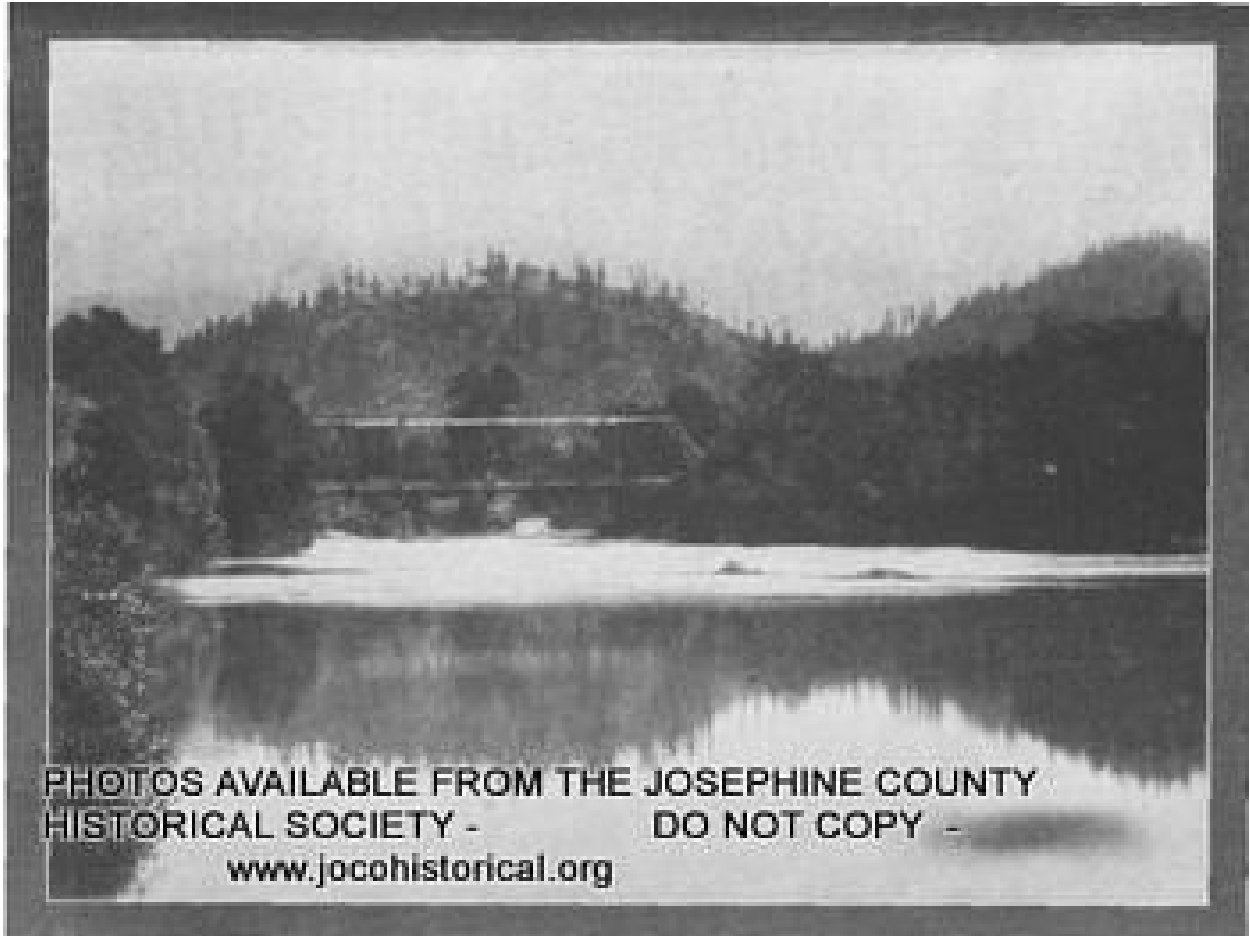
Birdseye view of Rock Point Covered Bridge



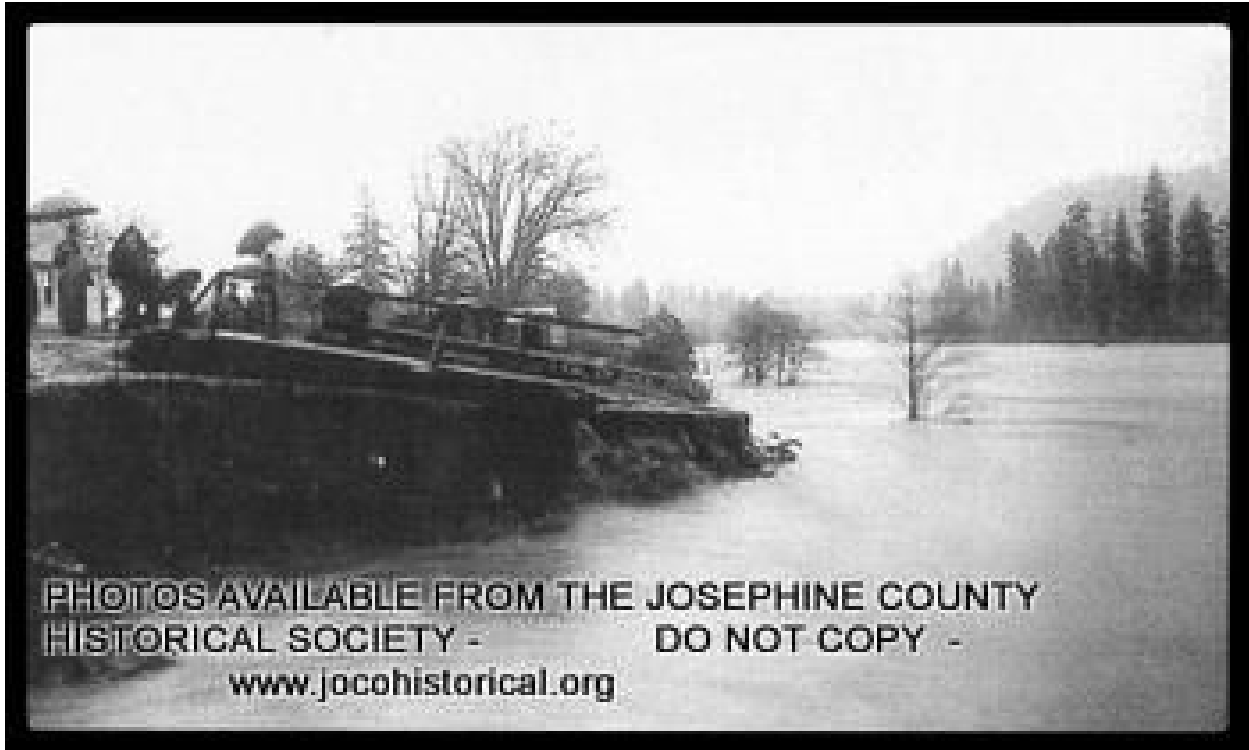
Boiler across footbridge to Almeda Mine



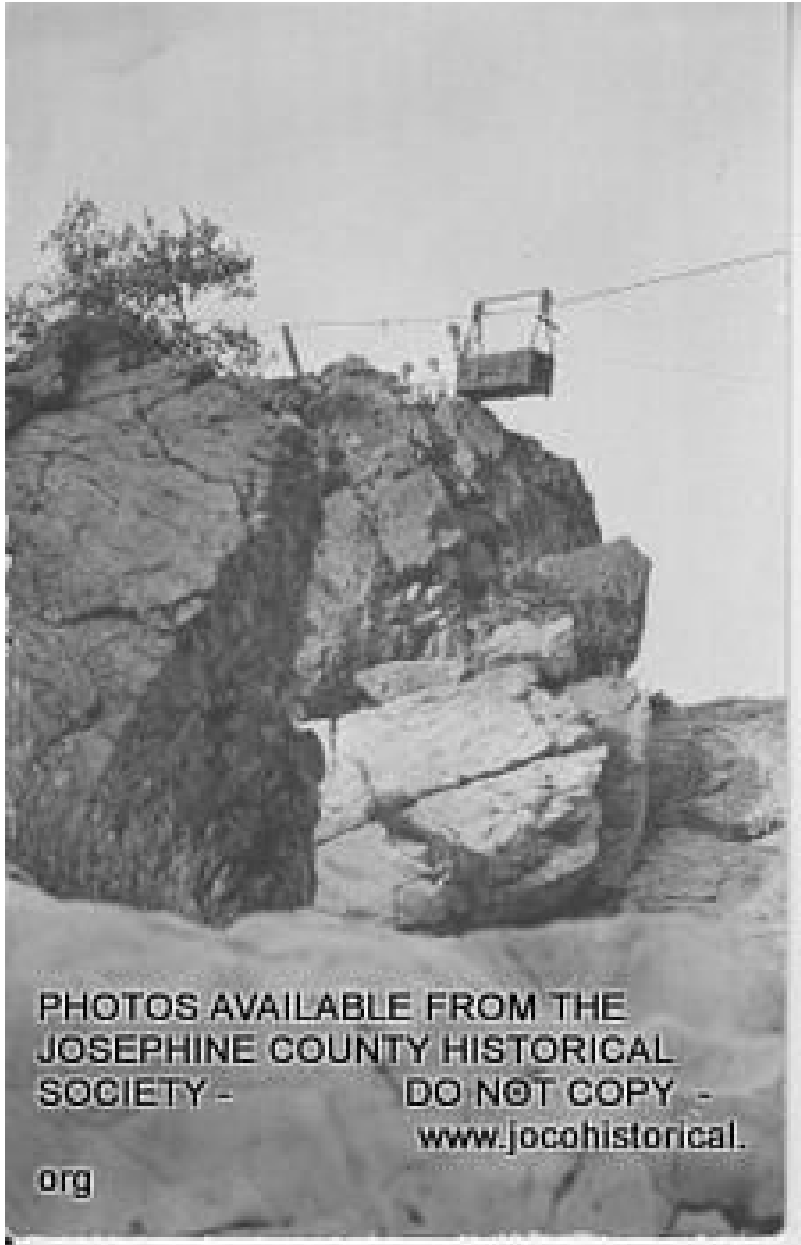
Both Bridges side by side in 1909 at Grants Pass



Bridge across Applegate near GP 1909

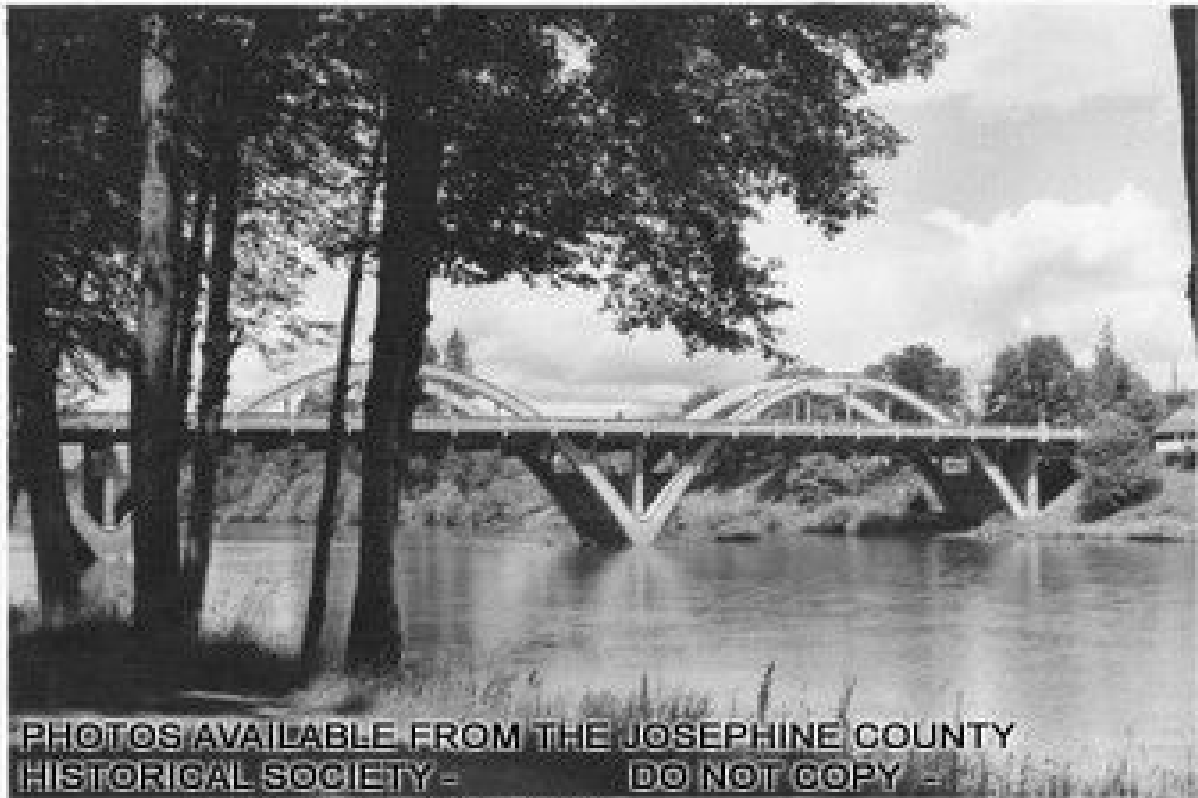


Bridge approach 1st bridge across Rogue



PHOTOS AVAILABLE FROM THE
JOSEPHINE COUNTY HISTORICAL
SOCIETY - DO NOT COPY -
www.jocohistorical.
org

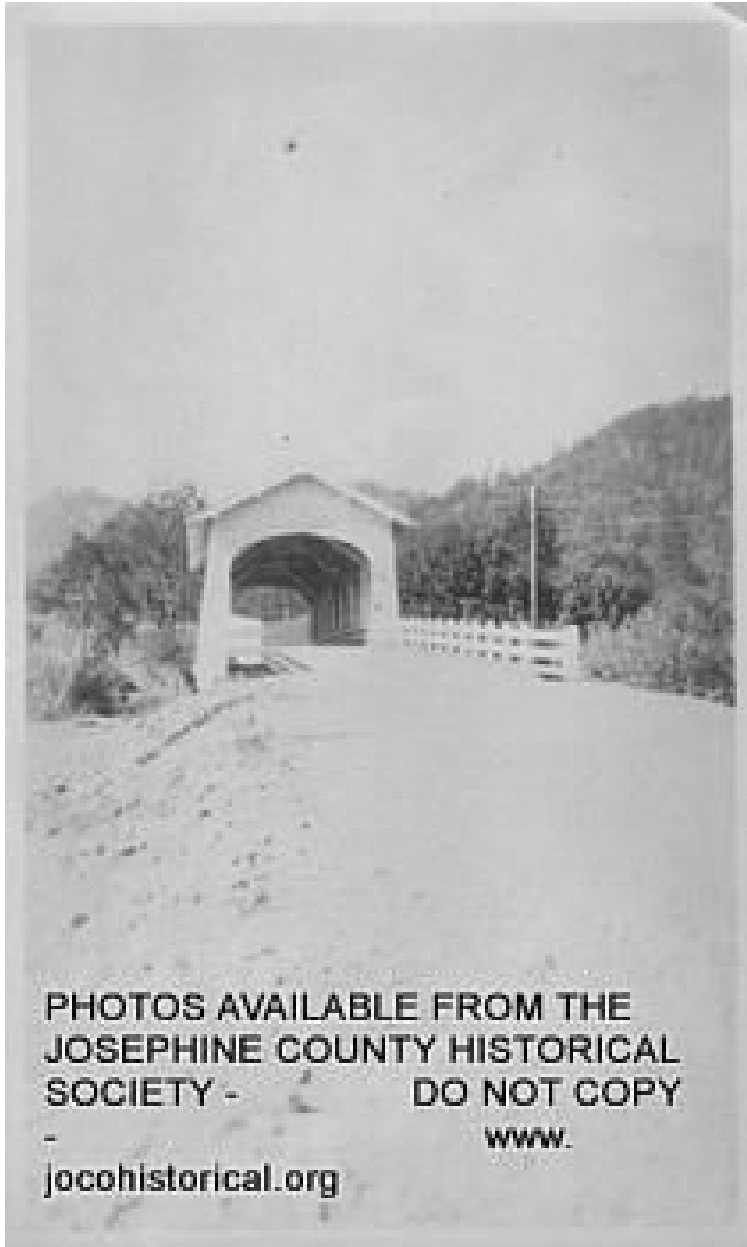
Cable car across river at Hell Gate on Rogue



PHOTOS AVAILABLE FROM THE JOSEPHINE COUNTY
HISTORICAL SOCIETY - DO NOT COPY -

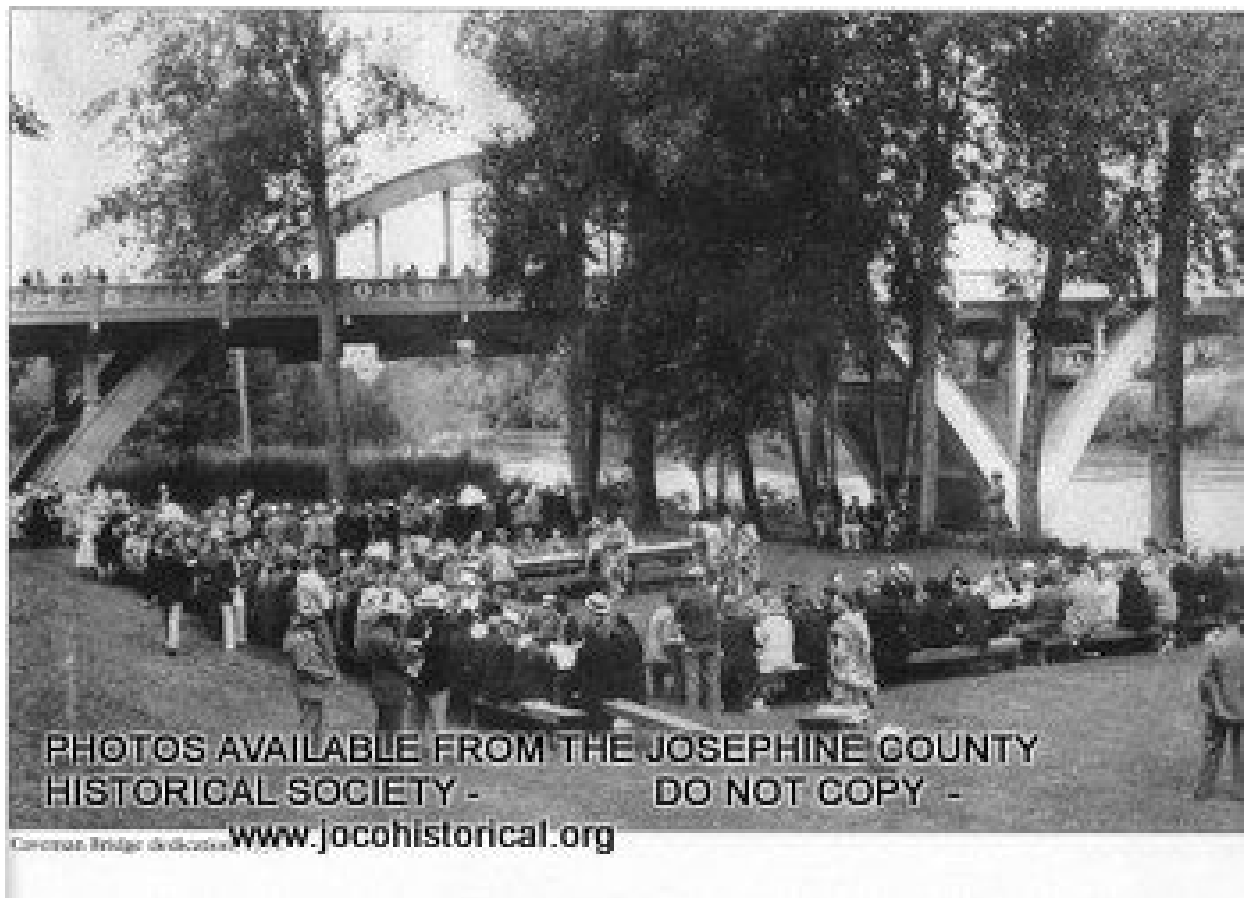
www.jocohistorical.org

Caveman Bridge from city park

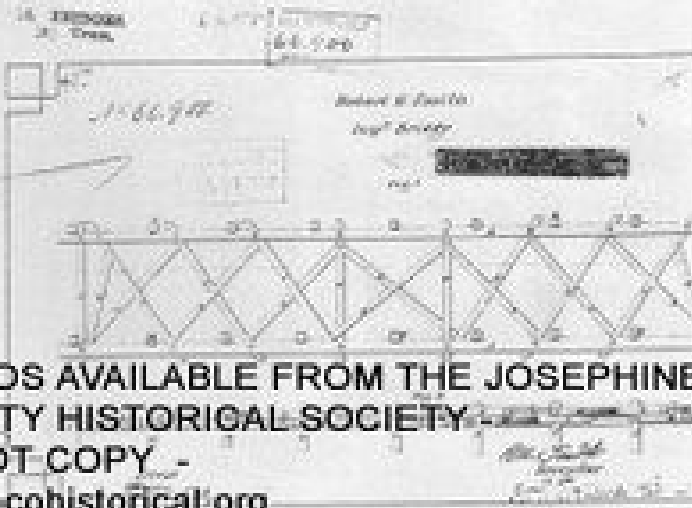


PHOTOS AVAILABLE FROM THE
JOSEPHINE COUNTY HISTORICAL
SOCIETY - DO NOT COPY
- WWW.
jocohistorical.org

Covered Bridge at Sunny Valley



Dedication of the Caveman Bridge 1931



PHOTOS AVAILABLE FROM THE JOSEPHINE
COUNTY HISTORICAL SOCIETY
DO NOT COPY -
www.jocohistorical.org

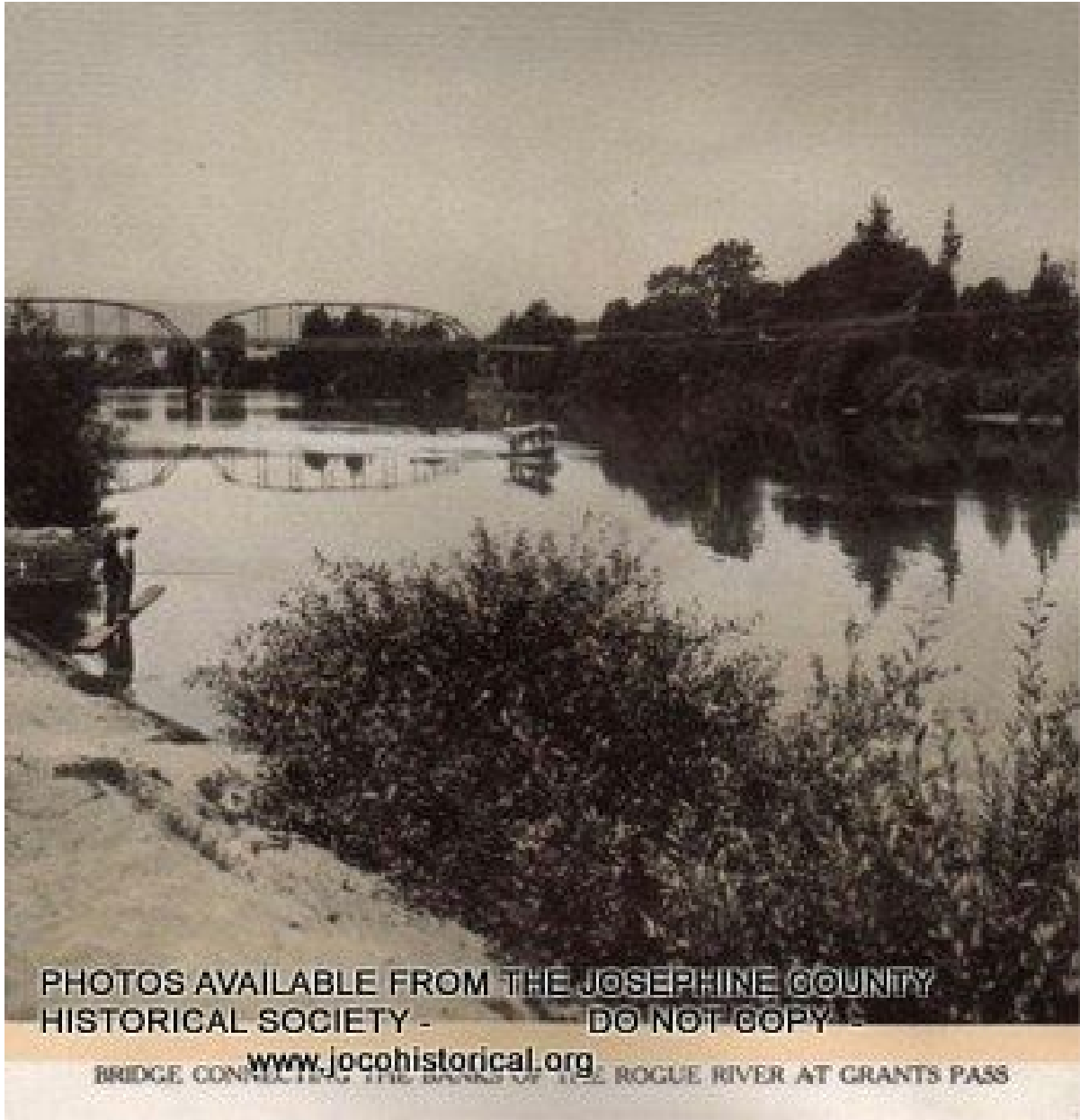
Details the Smith Patented Truss design



PHOTOS AVAILABLE FROM THE JOSEPHINE COUNTY
HISTORICAL SOCIETY - DO NOT COPY -

www.jocohistorical.org

Hell Gate Bridge flood of 1964

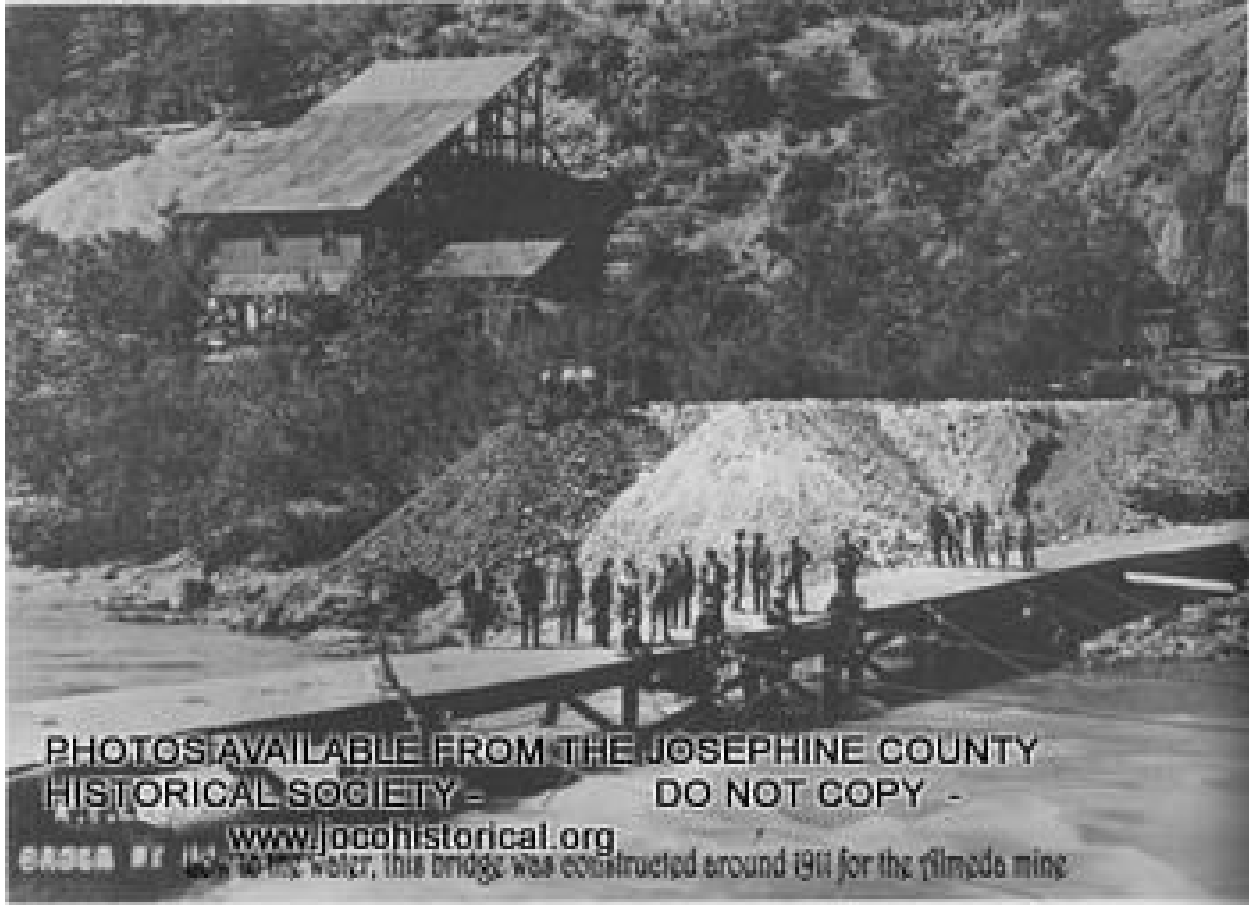


PHOTOS AVAILABLE FROM THE JOSEPHINE COUNTY
HISTORICAL SOCIETY - DO NOT COPY

www.jocohistorical.org

BRIDGE CONNECTING THE BANKS OF THE ROGUE RIVER AT GRANTS PASS

Looking west from the Riverside Park towards bridge



Low bridge to the Alameda Mine 1911



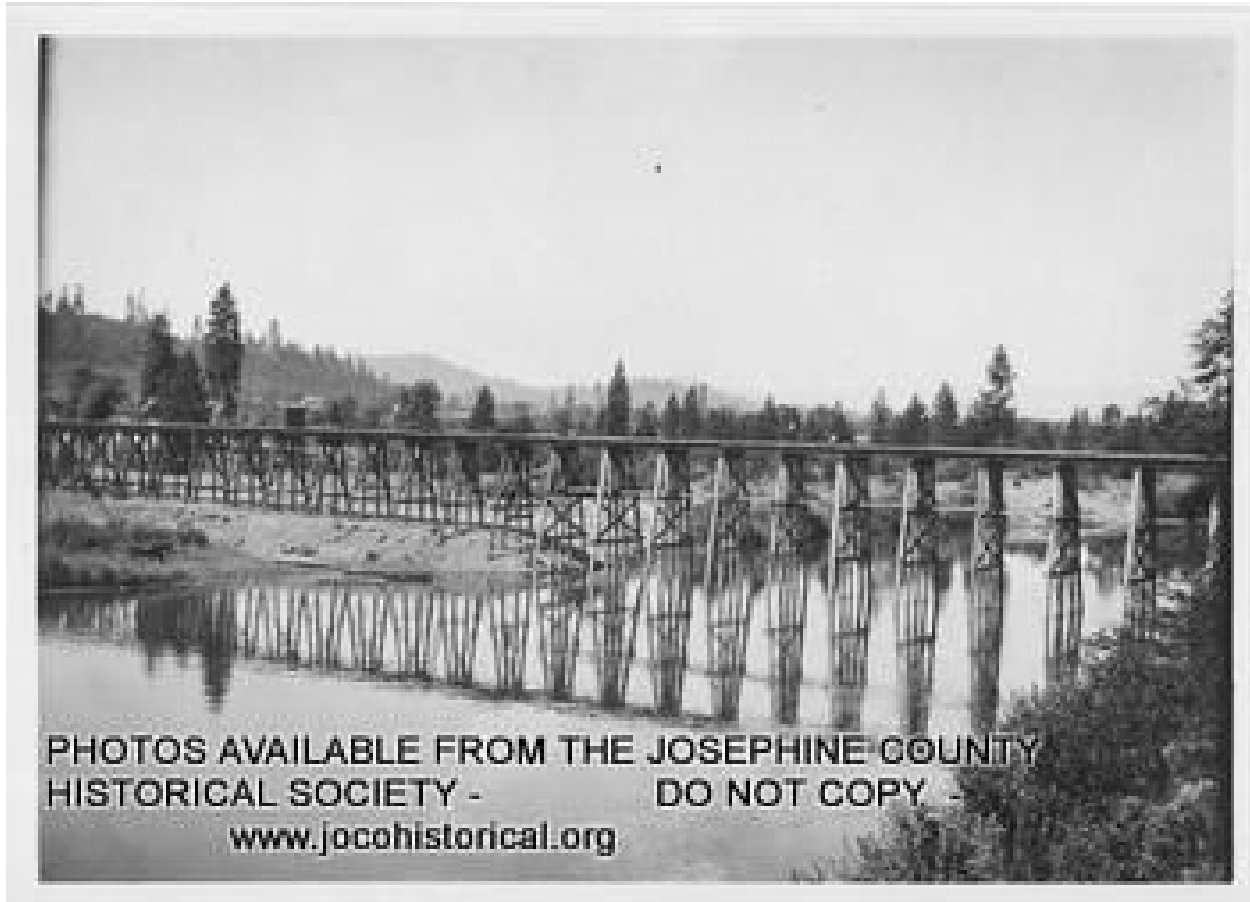
PHOTOS AVAILABLE FROM THE JOSEPHINE COUNTY
HISTORICAL SOCIETY - DO NOT COPY -
www.jocohistorical.org

Railroad Bridge and 55 flood

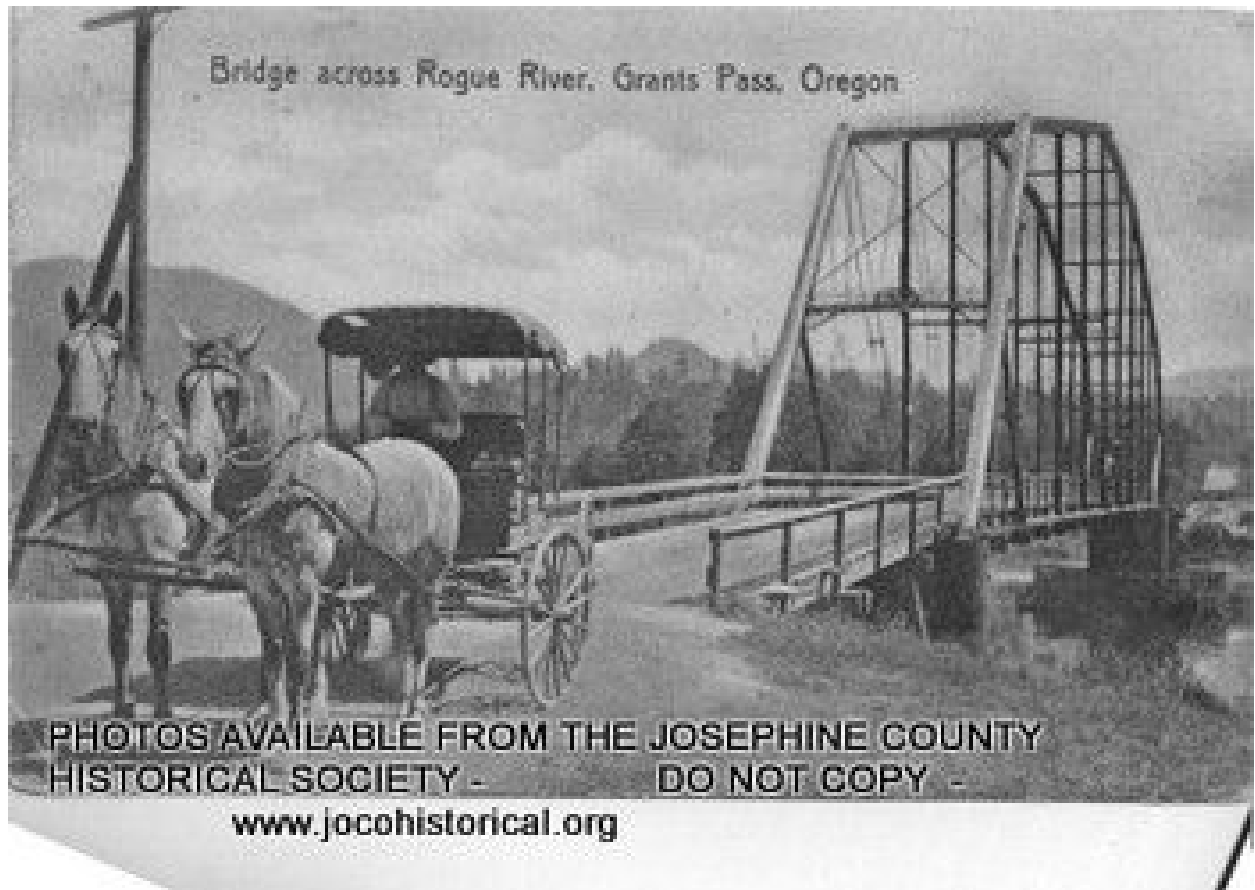


PHOTOS AVAILABLE FROM THE JOSEPHINE COUNTY
HISTORICAL SOCIETY - DO NOT COPY -
www.jocohistorical.org

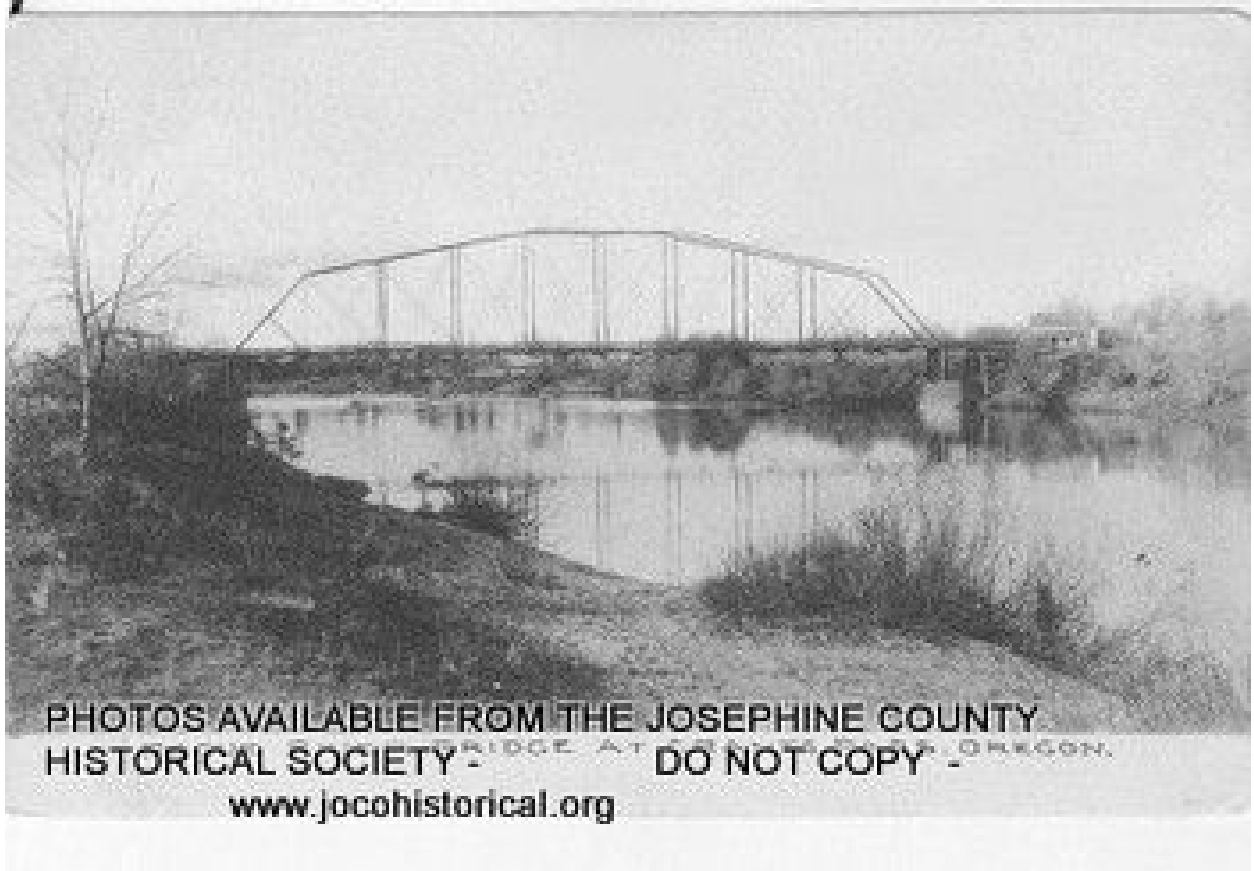
Robertson Bridge 1964 flood



RR Bridge probably across the Applegate



Single Span 2nd bridge at GP 1890 - 1909



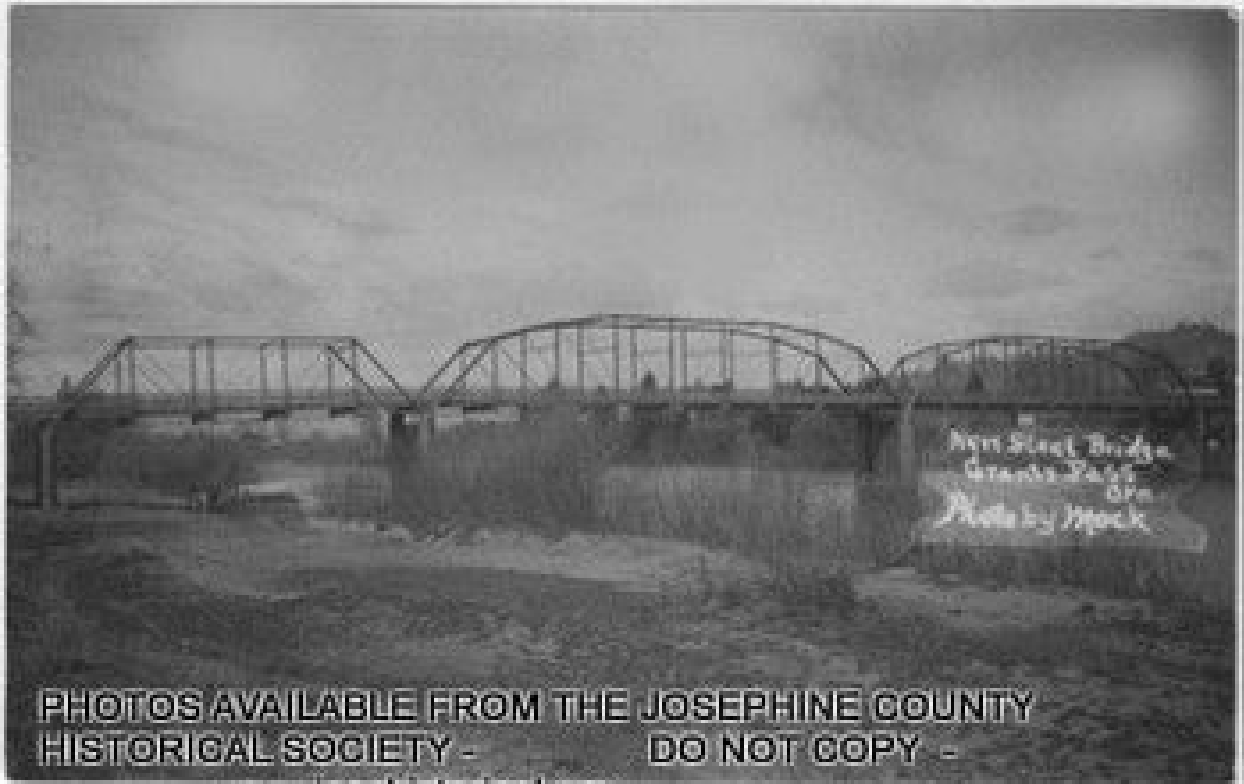
PHOTOS AVAILABLE FROM THE JOSEPHINE COUNTY
HISTORICAL SOCIETY - DO NOT COPY -
www.jocohistorical.org

Single Span Bridge at GP



PHOTOS AVAILABLE FROM THE JOSEPHINE COUNTY
HISTORICAL SOCIETY - DO NOT COPY -
www.jocohistorical.org

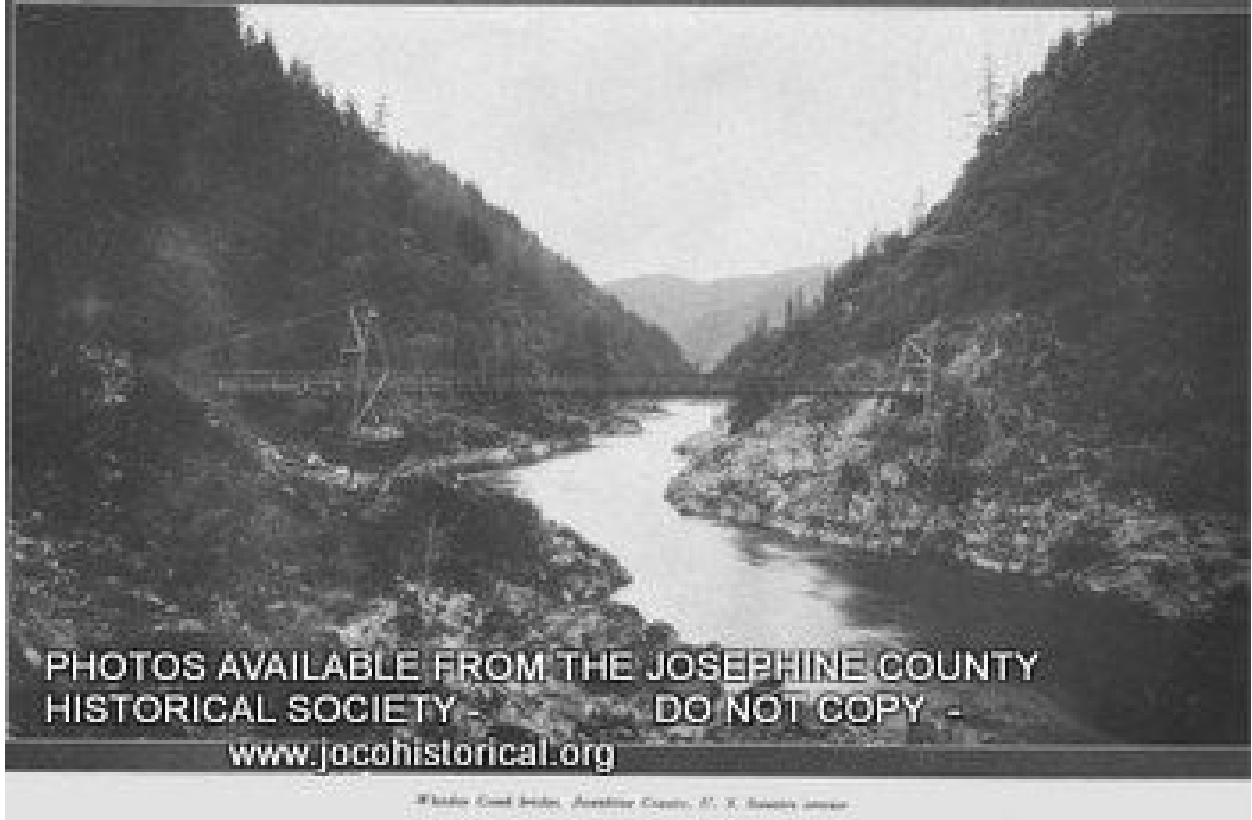
Single Span bridge over the Rogue River 1906



Three Span Bridge a Westerly View



Three Span Bridge at GP new in 1909 photo 1917



Whiskey Creek Bridge