



1887 West G Street scene as viewed from Sixth Street



**A. S. MILLER & SON,**  
Bridge Builders and General Contractors.



PHOTOS AVAILABLE FROM THE JOSEPHINE  
COUNTY HISTORICAL SOCIETY -  
DO NOT COPY -  
*Josephine Co. 10 1881*  
[www.jocohistorical.org](http://www.jocohistorical.org)

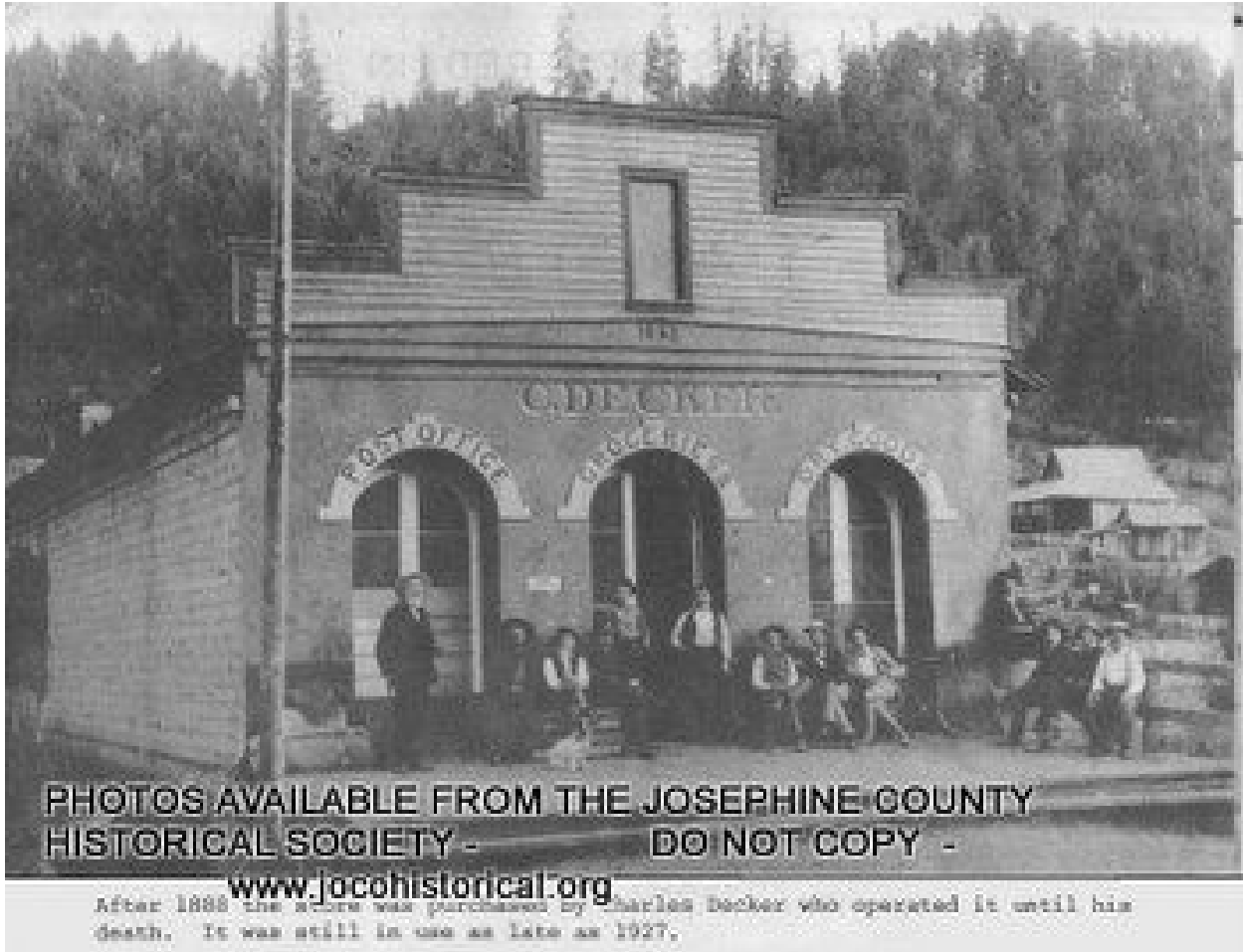
A.S. Miller & Son



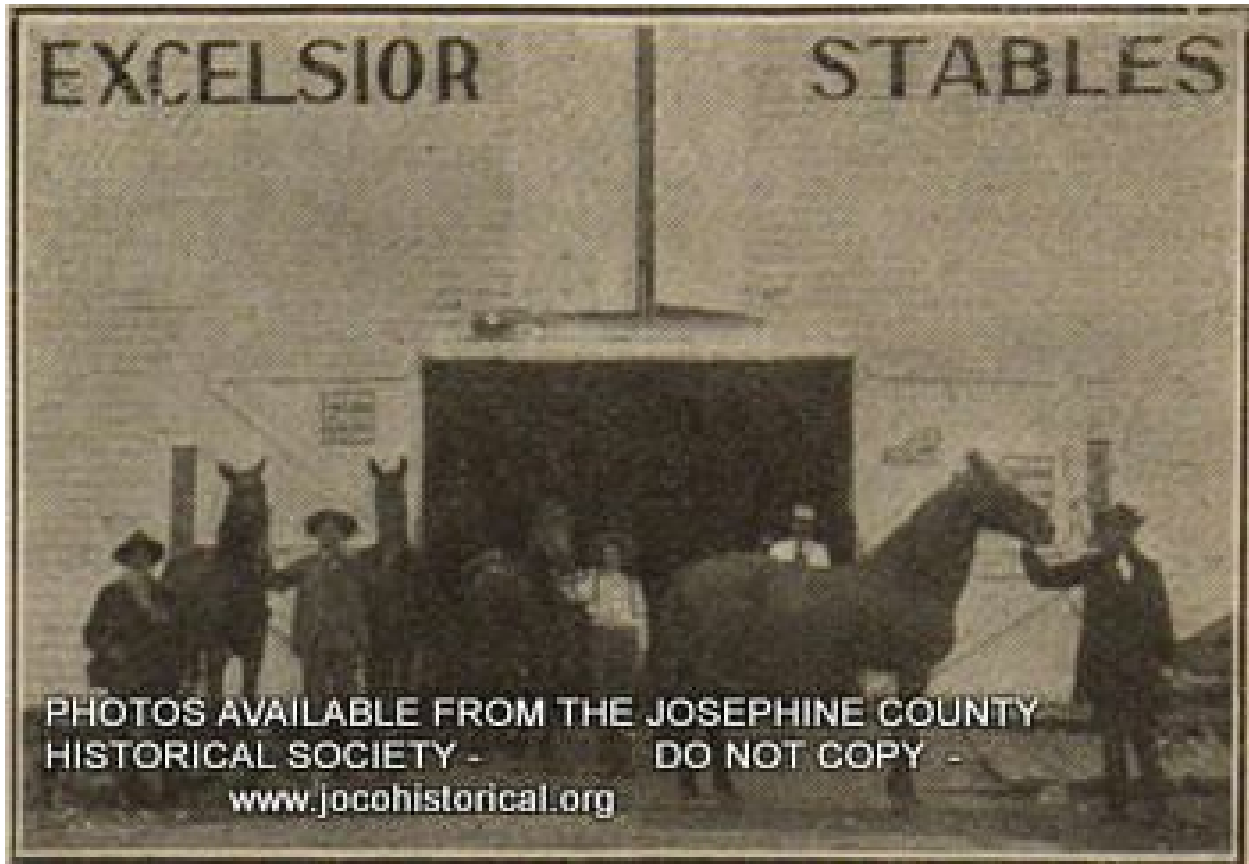
Auto Campgrounds in Riverside Park before 1929



Balloon ascension near present Safeway on G



Decker's Store at Waldo



PHOTOS AVAILABLE FROM THE JOSEPHINE COUNTY  
HISTORICAL SOCIETY - DO NOT COPY -  
[www.jocohistorical.org](http://www.jocohistorical.org)

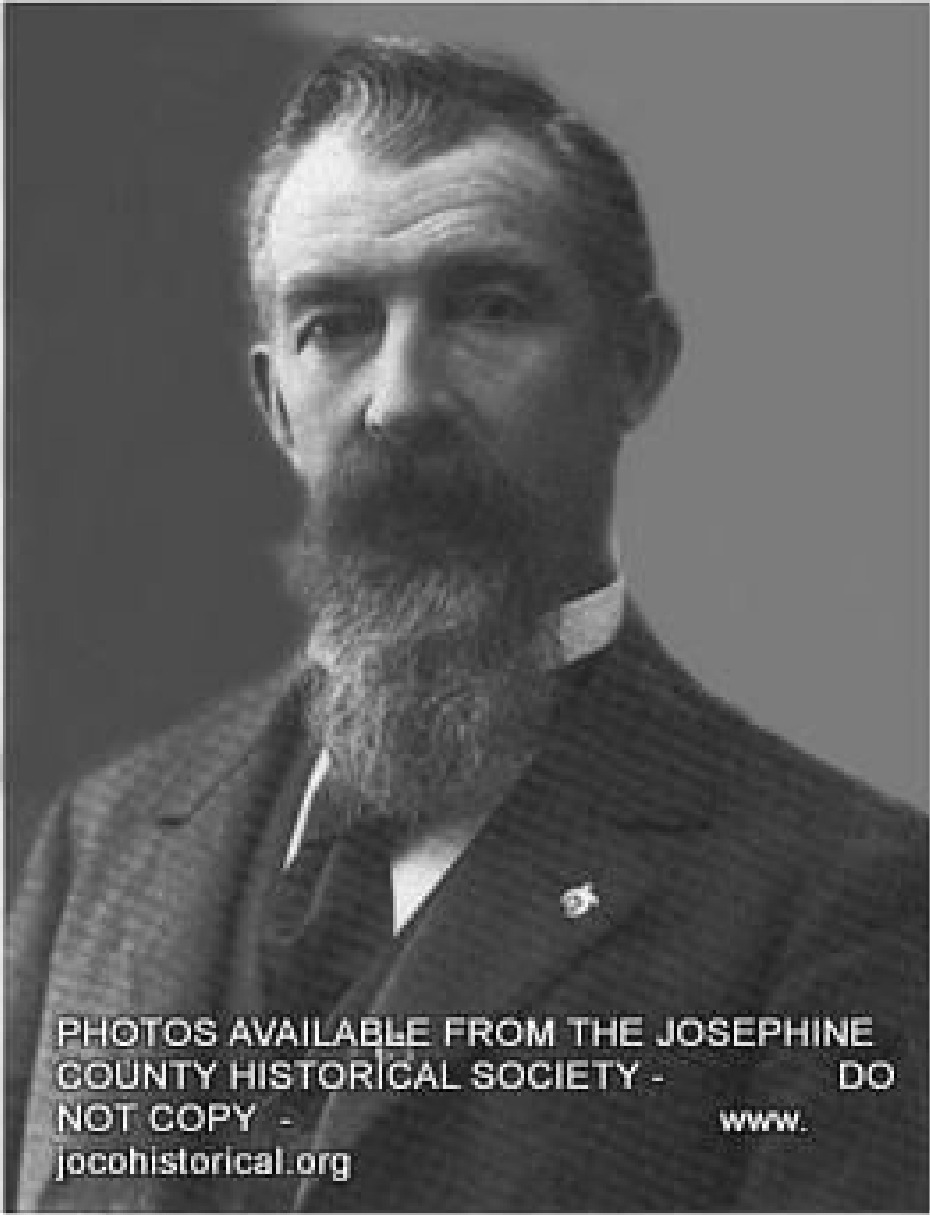
Excelsior Stable on H St between 5th & 6th



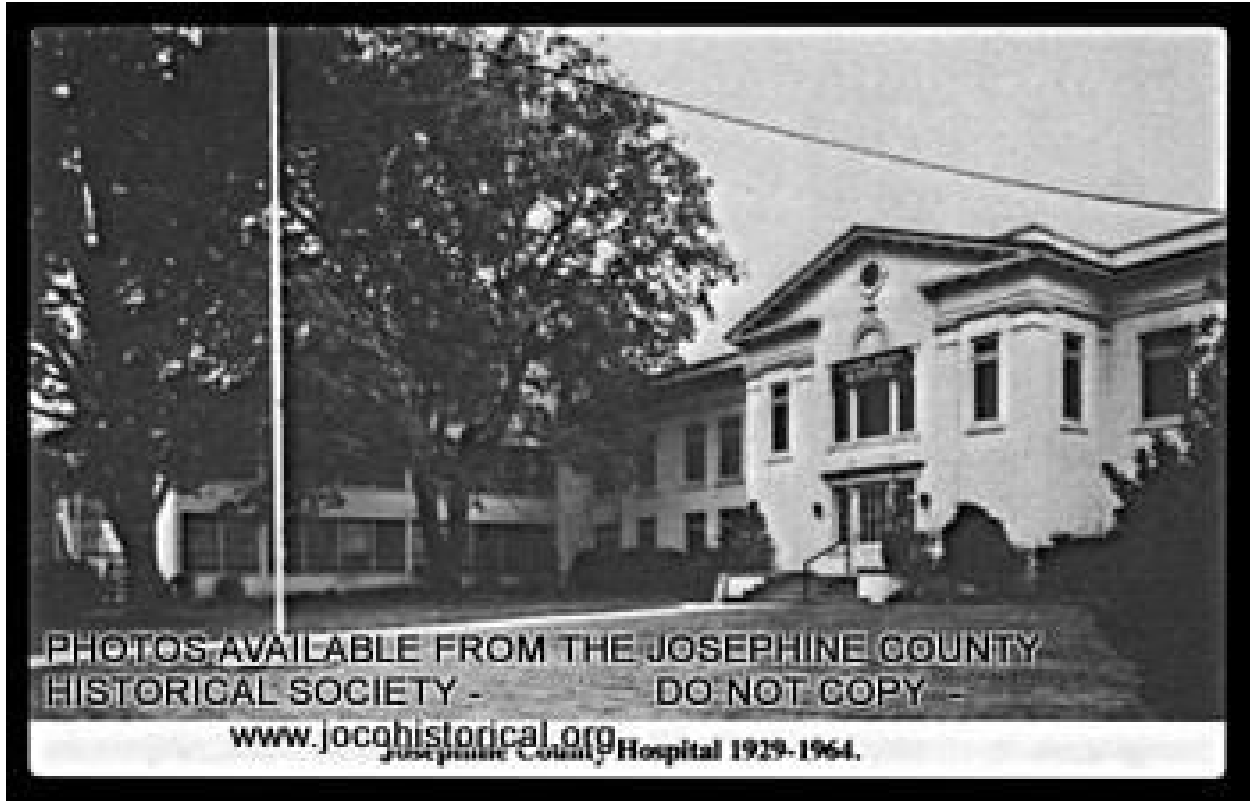
PHOTOS AVAILABLE FROM THE JOSEPHINE COUNTY  
HISTORICAL SOCIETY - DO NOT COPY -

[www.jocohistorical.org](http://www.jocohistorical.org) *Apple tree by the roadside*

Haines Apple Tree, Merlin 1909



J.O.

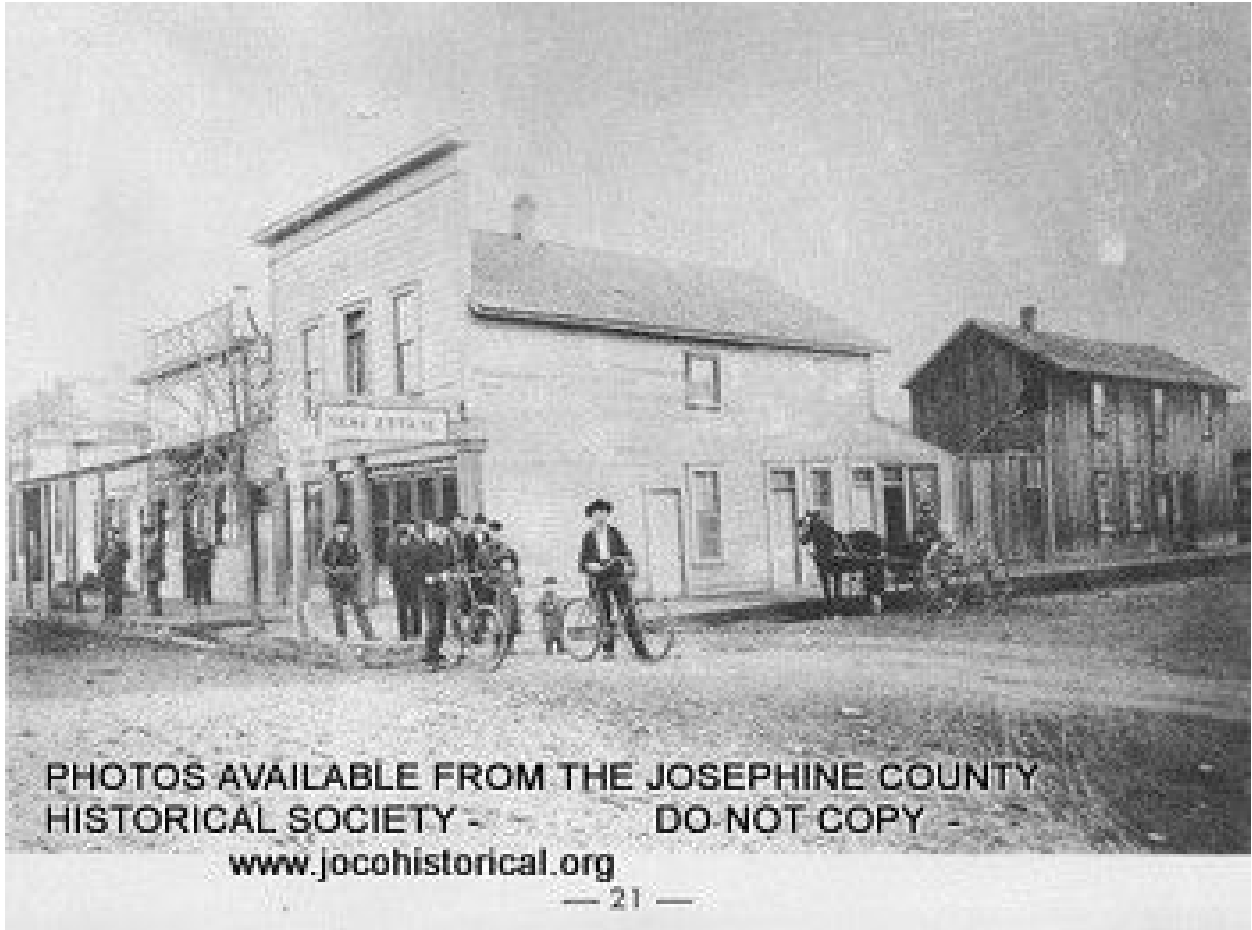


Josephine Hospital



Looking down A Street from Tokay Heights 1909





Looking East from Fifth Street and G



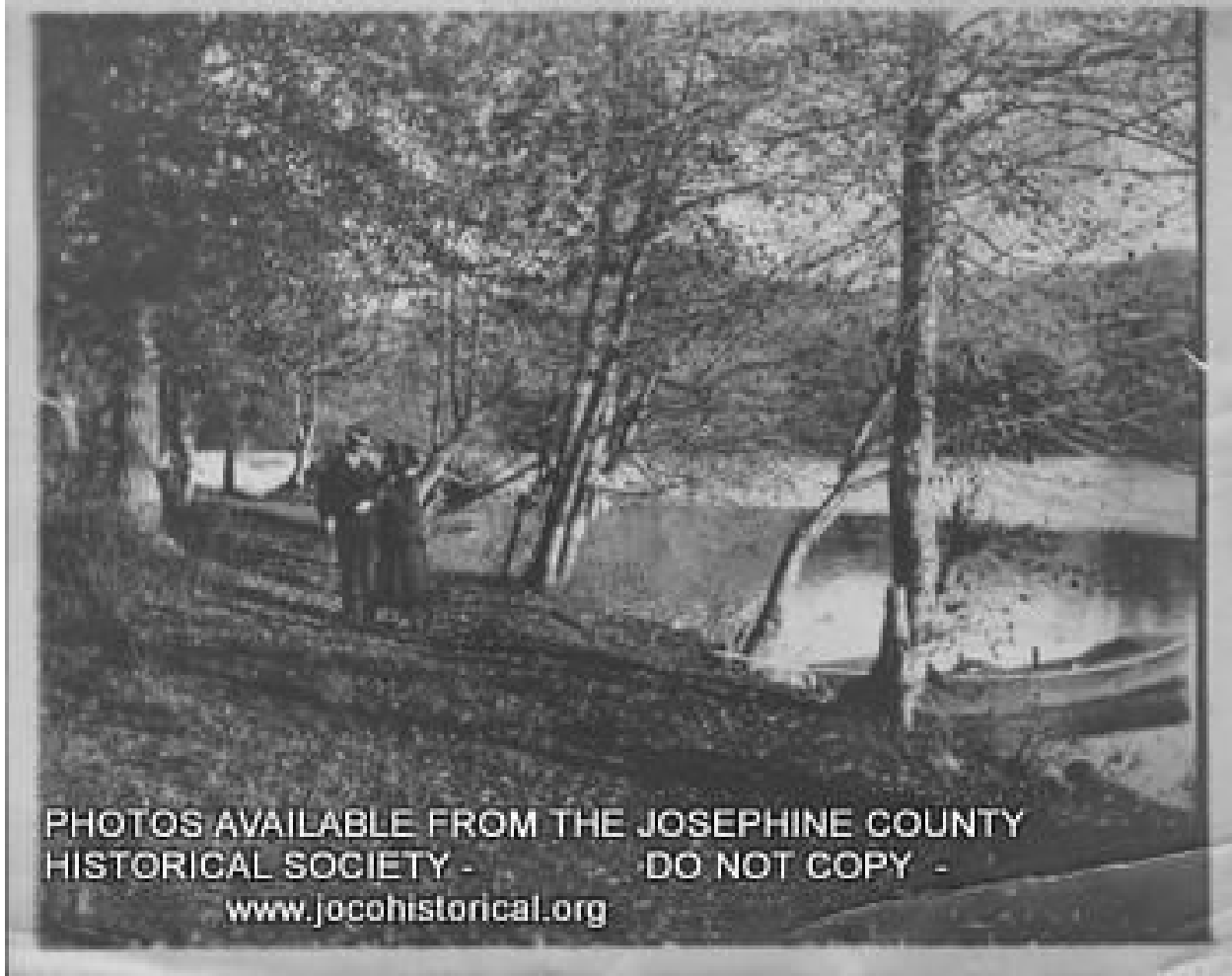
Grants Pass—Panorama of this thriving southern Oregon city in 1890. The largest building then was the courthouse, shown at the left inside a white fence. Grouped in the center is the Baptist church and residences. The building with the spire is the Methodist Church. The small building in foreground is the Frank Cook. This view is from east to west. The Grants Pass and Josephine Bank was purchased and became a branch of the United States National Bank in 1950. It had come into being as a consolidation in 1921 of the Grants Pass Banking Company, organized in 1901, and the Josephine Co. Bank founded in

Rare view looking east to west from Baptist Church in 1890



PHOTOS AVAILABLE FROM THE JOSEPHINE COUNTY  
HISTORICAL SOCIETY - DO NOT COPY -  
[www.jocohistorical.org](http://www.jocohistorical.org)

Store bldg in Old Grants Pass



PHOTOS AVAILABLE FROM THE JOSEPHINE COUNTY  
HISTORICAL SOCIETY - DO NOT COPY -  
[www.jocohistorical.org](http://www.jocohistorical.org)

Stroll along the Rogue River at Riverside Park



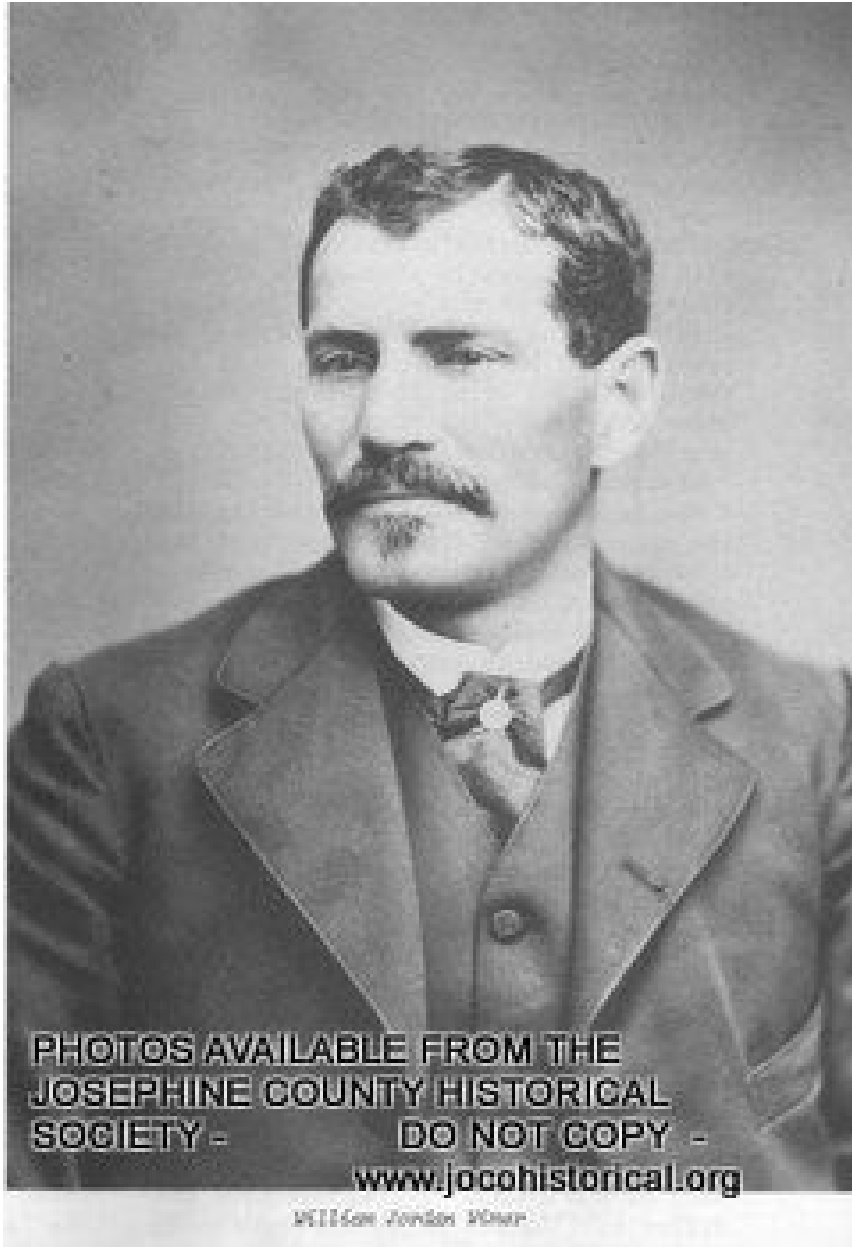
Takelma Indians at Siletz Reservation



Telford residence on Prospect Ave aka Gunnel house

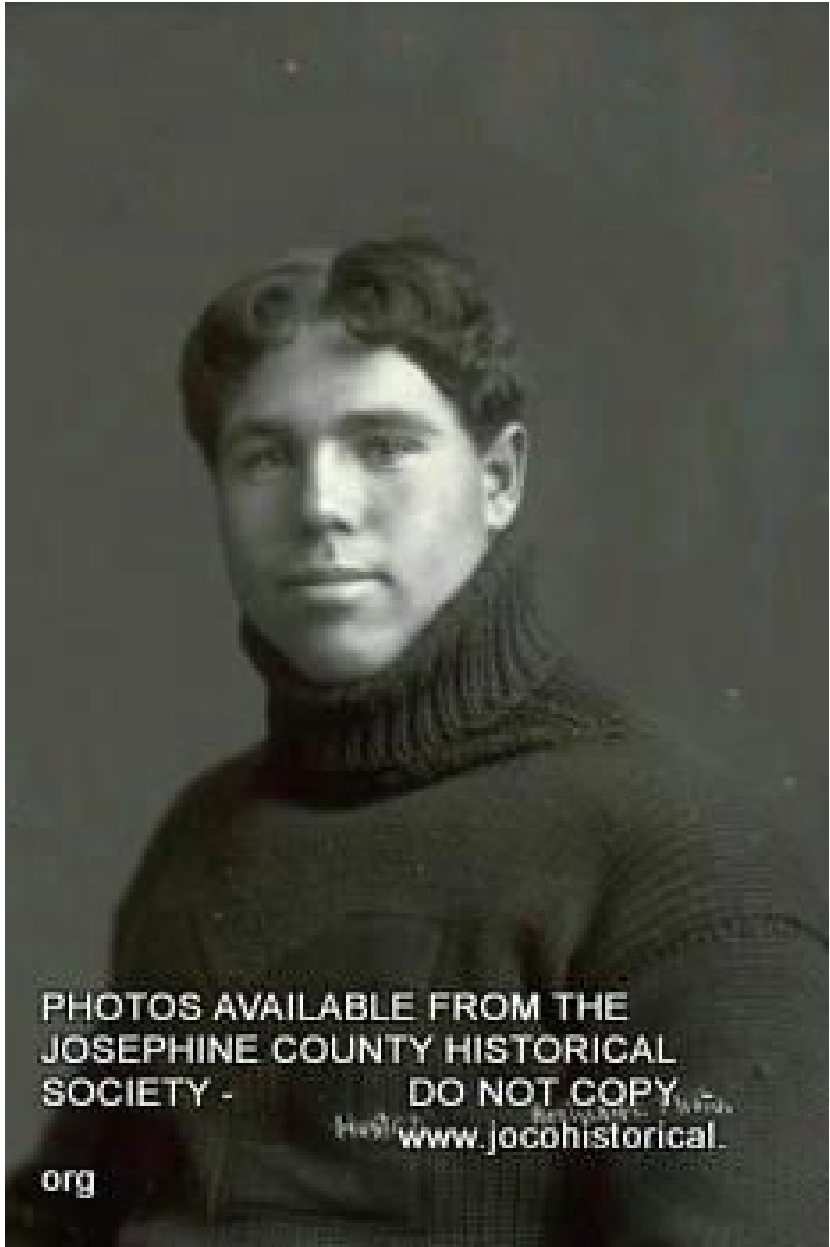


Trucks & scarifier with two yds gravel to stop spinning



Wimer & Sons mine

William Jordan Wimer owner of



Michigan

Willie Heston All American Univ of