

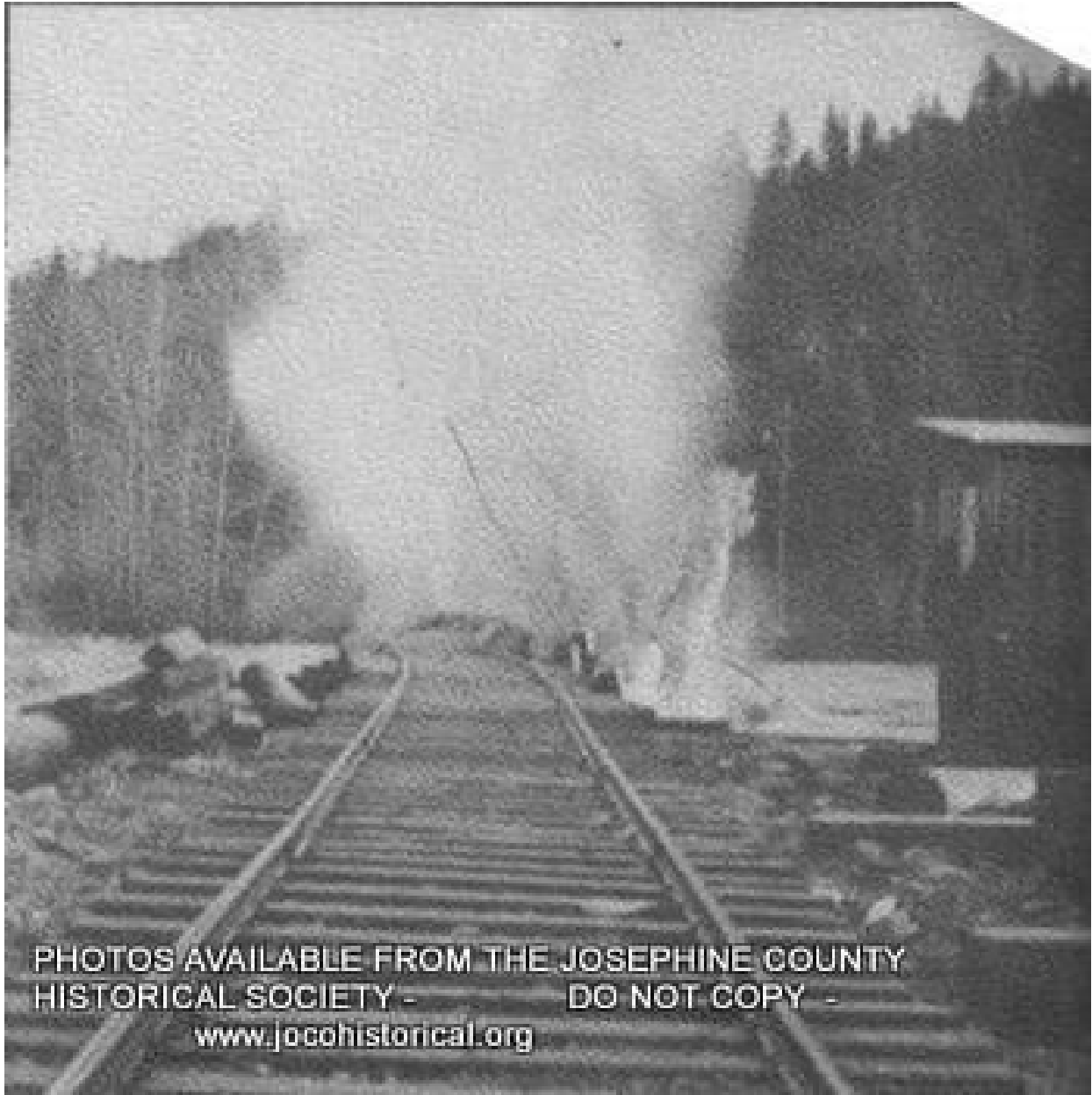
1st RR bridge across Rogue River at GP 1909



Applegate RR Bridge debris



Driving piling for Coast RR trestles

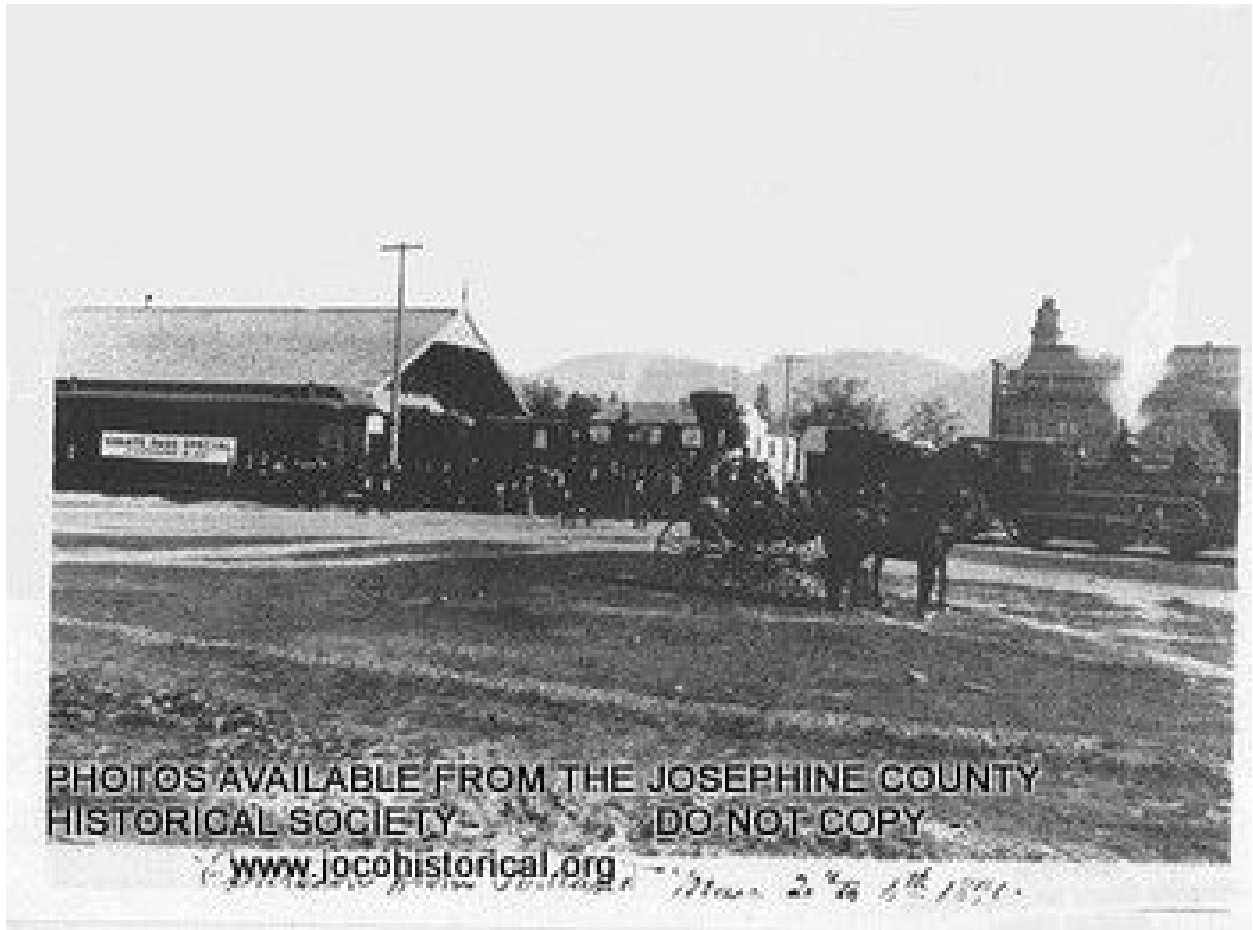


PHOTOS AVAILABLE FROM THE JOSEPHINE COUNTY
HISTORICAL SOCIETY - DO NOT COPY -
www.jocohistorical.org

Dynamiting debris from Applegate RR Bridge



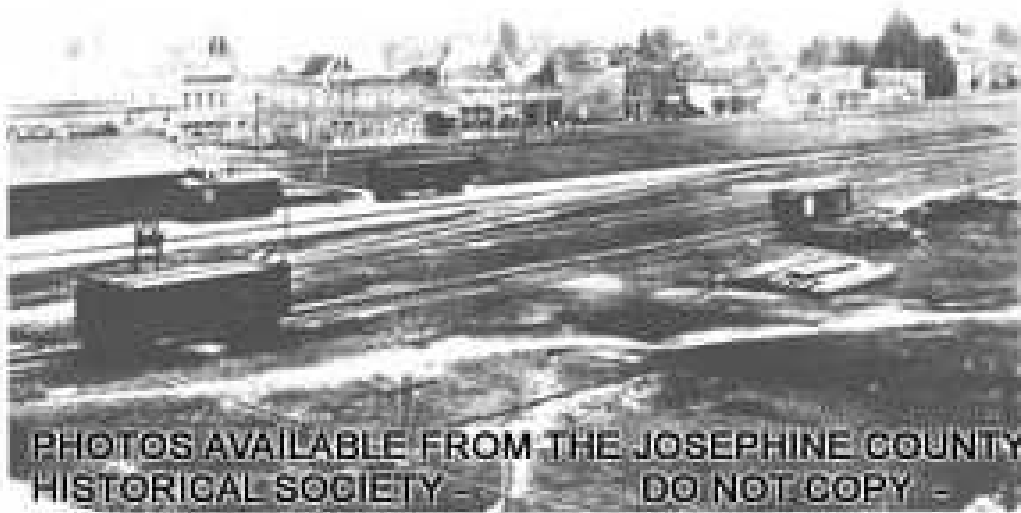
Engine and hopper used for cement loading



PHOTOS AVAILABLE FROM THE JOSEPHINE COUNTY
HISTORICAL SOCIETY - DO NOT COPY -
www.jocohistorical.org

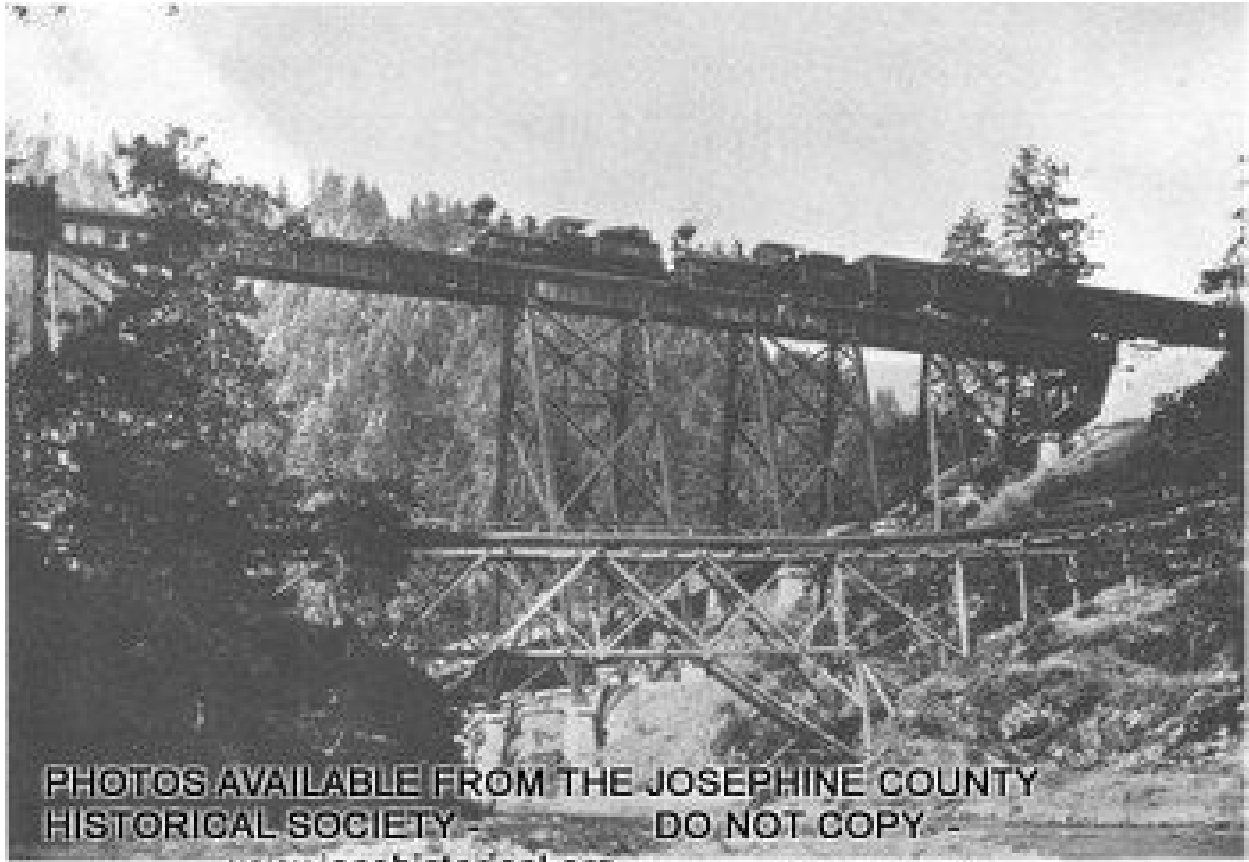
Photo from Portland - Dec. 2nd 1890.

Flynn Excursion Train from Portland 1890



PHOTOS AVAILABLE FROM THE JOSEPHINE COUNTY
HISTORICAL SOCIETY - DO NOT COPY -
www.jocohistorical.org

Looking at blocks 49 & 48 from railroad grounds 1900



PHOTOS AVAILABLE FROM THE JOSEPHINE COUNTY
HISTORICAL SOCIETY - DO NOT COPY -

www.jocohistorical.org

Grave Creek Trestle with Locomotives #1610 and #2206

Leland Trestle with locomotives



One Spot engine for the Coast RR started 1941



Passenger car for the C & OC RR



Photo of Depot taken 1884



PHOTOS AVAILABLE FROM THE JOSEPHINE COUNTY
HISTORICAL SOCIETY - DO NOT COPY -
www.jocohistorical.org

RR Bridge completed in 1911 to coast



PHOTOS AVAILABLE FROM THE JOSEPHINE COUNTY
HISTORICAL SOCIETY - DO NOT COPY -

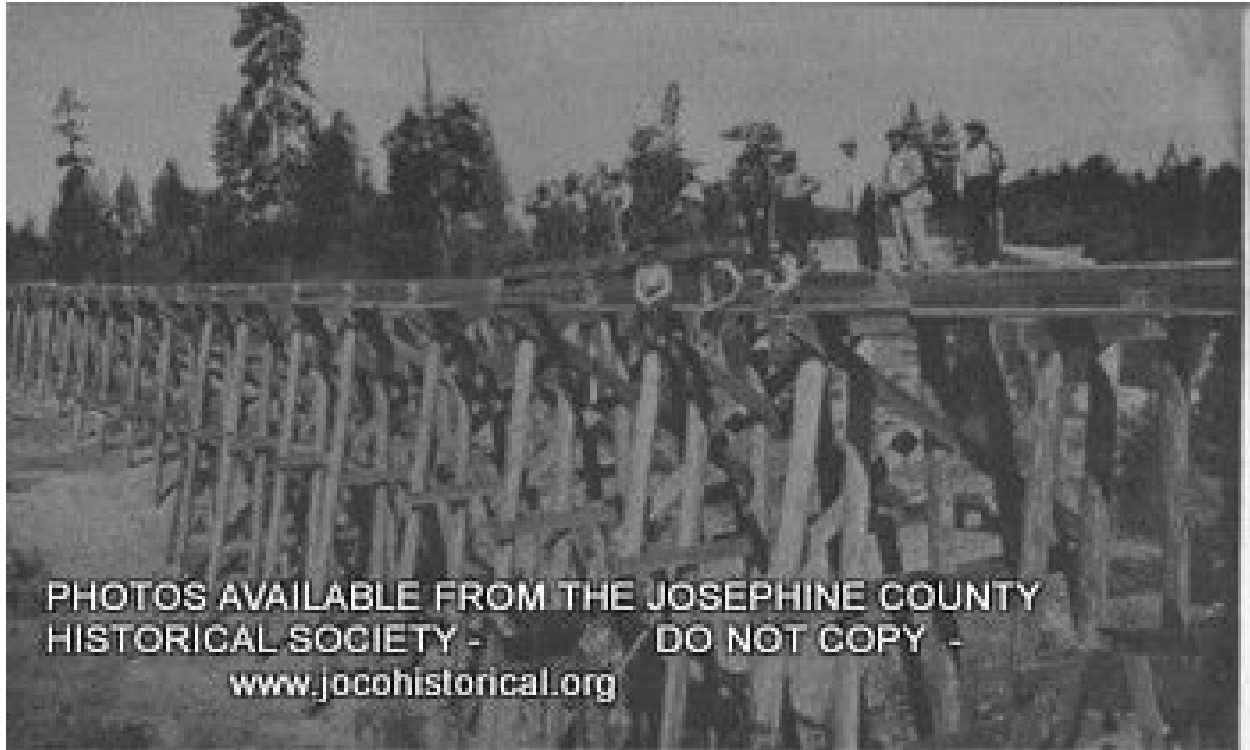
www.jocohistorical.org

Southern Pacific Locomotive #3249

Southern Pacific Locomotive # 3249



Three Pines lumber flume being repaired



Trestle near Allen Creek



Unloading rails for the Coast Railroad 1914